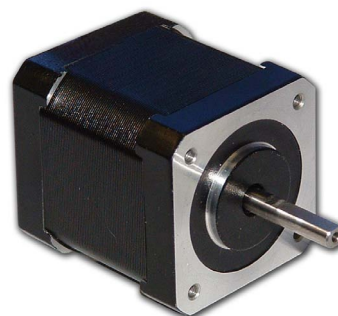


2S42A Series - High Torque Stepper Motors

Kinco

FEATURES

- **42mm Frame Size**
- **1.8° Step Angle (0.9° and 3.6° also available)**
- **High Torque - Up to .78 Nm**
- **High Step Accuracy and Resolution**
- **Low Vibration and Noise**
- **Shaft Flat as Standard**
- **Can be Customized for**
 - **Winding Current**
 - **Shaft Options**
 - **Cables and Connectors**
- **CE Certified and RoHS Compliant**



DESCRIPTION

The 2S42A Series High Torque Step Motors offer a great value without sacrificing quality. These motors were designed to offer the highest possible torque while minimizing vibration and audible noise. A broad line of motor windings and stack lengths are available off-the-shelf, or the motors can be customized to fit your machine requirements. We can customize the winding to perfectly match your voltage, current, and maximum operating speed for maximum flexibility.

CUSTOM ORDER LAYOUT

Model #	Frame Size (mm)	Bipolar Torque (Nm)	Bipolar Current (A)	Bipolar Voltage (V)	Bipolar Resistance (ohms)	Bipolar Inductance (mH)	Rotor Inertia (g-cm ²)	Shaft Diameter (mm)	# Lead Wires	Weight (kg)	"L" Length (mm)
2S42A-034-007-4X	42	0.20	0.71	5.0	7.3	10.0	38	5	4	0.20	34
2S42A-040-009-4X	42	0.35	0.85	5.6	6.6	10.0	54	5	4	0.28	40
2S42A-048-009-4X	42	0.43	0.85	5.6	6.6	11.0	68	5	4	0.35	48
2S42A-060-009-4X	42	0.78	0.85	3.3	12	29	102	5	4	0.50	60

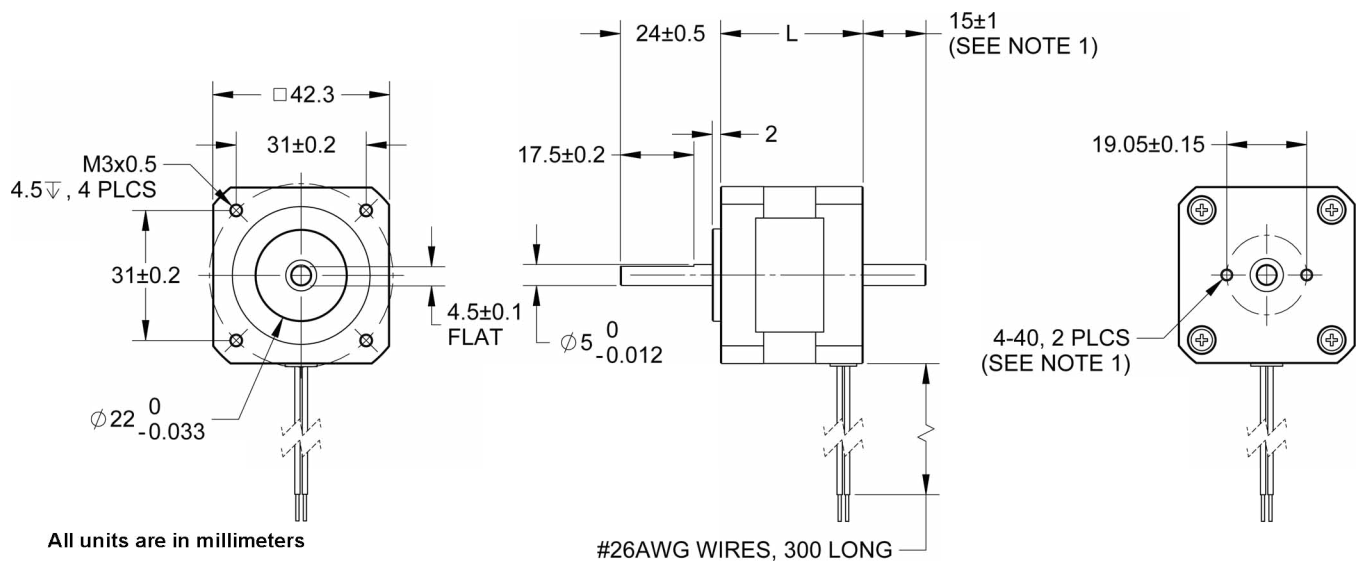
Notes: The 16th character "X" denotes a single or dual shaft. Use "S" for single shaft, or "D" for dual shaft. Dual shafts include encoder mounting provisions. Custom leadwires, cables, connectors, and windings are available upon request.

L011352

2S42A Series - High Torque Stepper Motors

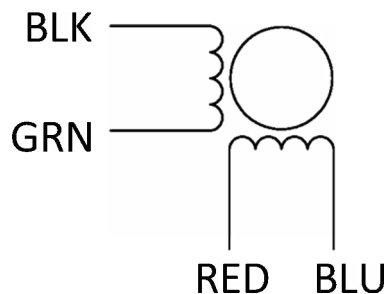
Kinco

DIMENSION DRAWING



Note 1: Applies to dual shaft option only

WIRING INFORMATION



Connection	Lead Wire Connection	Lead Wire Color
4 - Lead Bipolar Series MBC Series	Phase 1 (A) Phase 3 (A\ Phase 2 (B) Phase 4 (B\)	Black Green Red Blue

SPECIFICATIONS

Step Angle Accuracy:	$\pm 5\%$ (Full Step, No Load)	Insulation Resistance:	100M Ohm Min, 500VDC
Inductance Accuracy:	$\pm 20\%$	Dielectric Strength:	500VAC for 1 Minute
Temperature Rise:	80°C Max (2 Phases On)	Shaft Radial Play:	0.508mm Max (450g-load)
Ambient Temperature:	-20° to +50° C	End Play:	2.032mm Max (450g-load)
Insulation Type:	Class B	Max Radial Force:	28N (20mm from flange)
		Max Axial Force:	10N

L011352